

IECC ENERGY CODE NOTES:

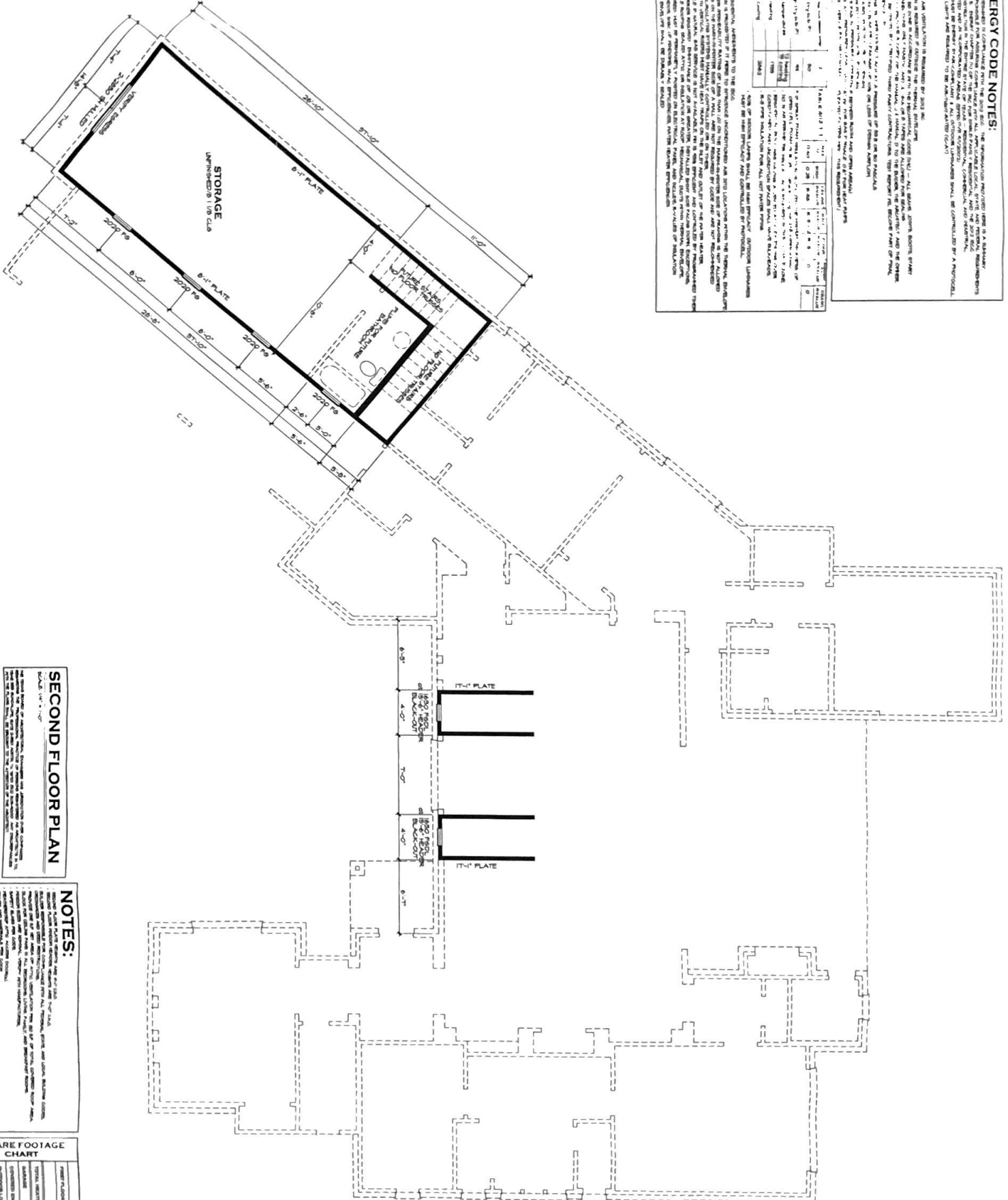
1. All construction shall comply with the International Energy Conservation Code (IECC) 2009 Edition, with all amendments through the 2012 Edition. The International Energy Conservation Code (IECC) 2009 Edition, with all amendments through the 2012 Edition, shall be used for all construction. All construction shall be in accordance with the International Energy Conservation Code (IECC) 2009 Edition, with all amendments through the 2012 Edition. All construction shall be in accordance with the International Energy Conservation Code (IECC) 2009 Edition, with all amendments through the 2012 Edition. All construction shall be in accordance with the International Energy Conservation Code (IECC) 2009 Edition, with all amendments through the 2012 Edition.

HVAC

1. All HVAC systems shall be designed in accordance with the International Energy Conservation Code (IECC) 2009 Edition, with all amendments through the 2012 Edition. All HVAC systems shall be designed in accordance with the International Energy Conservation Code (IECC) 2009 Edition, with all amendments through the 2012 Edition. All HVAC systems shall be designed in accordance with the International Energy Conservation Code (IECC) 2009 Edition, with all amendments through the 2012 Edition. All HVAC systems shall be designed in accordance with the International Energy Conservation Code (IECC) 2009 Edition, with all amendments through the 2012 Edition.

System	Design Conditions	Design Airflow (CFM)	Design Temperature (°F)	Design Humidity Ratio (lb/lb)	Design Pressure (in. wg)
Supply	75°F DB, 55°F WB	1000	75	0.01	0.1
Return	75°F DB, 65°F WB	1000	75	0.02	0.1

1. All HVAC systems shall be designed in accordance with the International Energy Conservation Code (IECC) 2009 Edition, with all amendments through the 2012 Edition. All HVAC systems shall be designed in accordance with the International Energy Conservation Code (IECC) 2009 Edition, with all amendments through the 2012 Edition. All HVAC systems shall be designed in accordance with the International Energy Conservation Code (IECC) 2009 Edition, with all amendments through the 2012 Edition. All HVAC systems shall be designed in accordance with the International Energy Conservation Code (IECC) 2009 Edition, with all amendments through the 2012 Edition.



SECOND FLOOR PLAN

Copyright © 2013 Elliot Johnson
 All drawings, specifications, and schedules are the property of Elliot Johnson Architects, Inc. and shall remain the property of Elliot Johnson Architects, Inc. No part of this drawing may be reproduced or transmitted in any form or by any means, electronic or mechanical, including photocopying, recording, or by any information storage and retrieval system, without the prior written permission of Elliot Johnson Architects, Inc.

NOTES:
 1. All construction shall be in accordance with the International Energy Conservation Code (IECC) 2009 Edition, with all amendments through the 2012 Edition.
 2. All HVAC systems shall be designed in accordance with the International Energy Conservation Code (IECC) 2009 Edition, with all amendments through the 2012 Edition.
 3. All electrical systems shall be designed in accordance with the National Electrical Code (NEC) 2009 Edition, with all amendments through the 2012 Edition.
 4. All plumbing systems shall be designed in accordance with the International Plumbing Code (IPC) 2009 Edition, with all amendments through the 2012 Edition.
 5. All mechanical systems shall be designed in accordance with the International Mechanical Code (IMC) 2009 Edition, with all amendments through the 2012 Edition.
 6. All fire protection systems shall be designed in accordance with the International Fire Code (IFC) 2009 Edition, with all amendments through the 2012 Edition.
 7. All safety systems shall be designed in accordance with the International Life Safety Code (ILSC) 2009 Edition, with all amendments through the 2012 Edition.
 8. All accessibility systems shall be designed in accordance with the International Building Code (IBC) 2009 Edition, with all amendments through the 2012 Edition.
 9. All other systems shall be designed in accordance with the applicable codes and standards.

SQUARE FOOTAGE CHART

Room	Area (sq ft)	Volume (cu ft)
STORAGE	100	1000
BATH	50	500
OTHER	100	1000
TOTAL	250	2500

A-2.2

A CUSTOM RESIDENCE FOR:
SHILOH + JENNY NEWMAN
 1245 Carefree Circle
 Lakeway Texas 78734

IMAGES OF...
ELLIOT H. JOHNSON
 AIA TBAE #17526
 1354 THE HIGH ROAD AUSTIN TEXAS 78746
 512-327-3032
 ELLIOT@IMAGESOF.NET

C + A BUILDERS INC.
CHRIS COKINS
 325 W. 820 S. #78 106
 LAKEWAY TEXAS 78734
 817-299-4340
 OWNERS: Tom & Corinne 512-415-2256

